

SPECIFICATIONS:

RATING: DC 3V 50uA-Dc 5V 10mA.
 OPERATING TEMPERATURE: -20°C to +70°C.
 OPERATING FORCE: 0.3N (31gf).
 RESISTANCE TO SOLDERING HEAT: Manual soldering 300°C 3 sec.

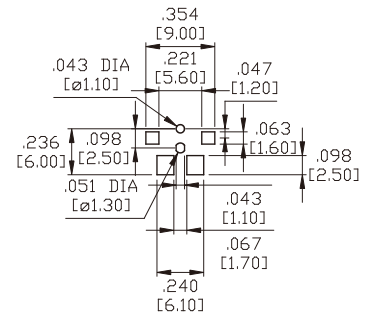
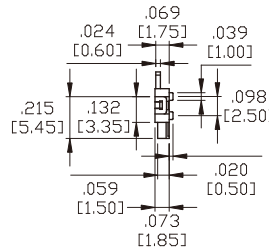
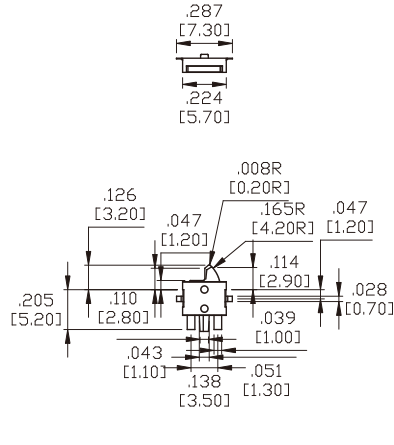
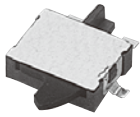
Reflow soldering 250°C 20 sec max.

CONTACT RESISTANCE(Initial performance/ After lifetime): 500m-ohms max. /1-ohms max.
 INSULATION RESISTANCE: More than 100M-ohms at 100VDC.
 WITHSTANDING VOLTAGE: 100VAC, 1 minute.
 OPERATING LIFE(WITH LOAD): 100,000 cycles.

Specifications and Dimensions subject to change

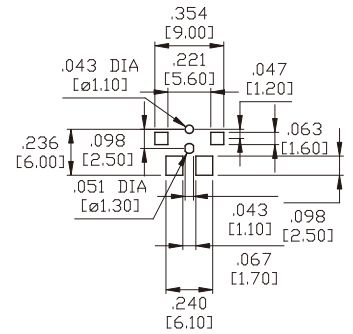
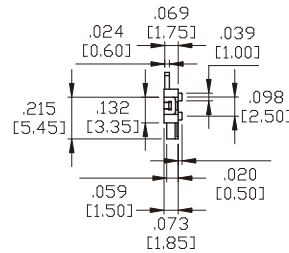
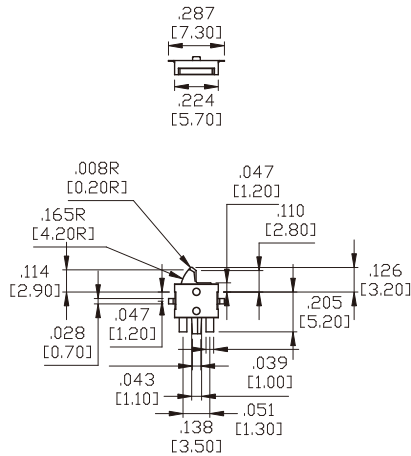
12MTL

REFLOW PATTERN



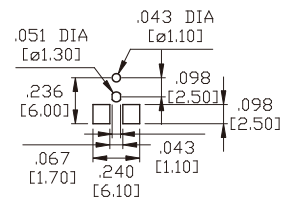
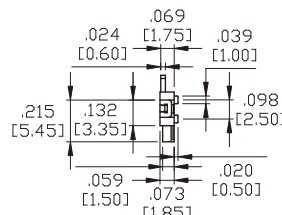
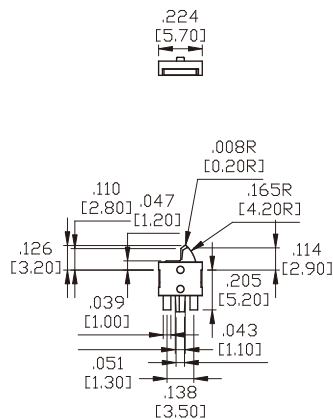
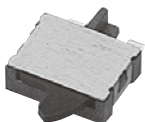
12MTR

REFLOW PATTERN



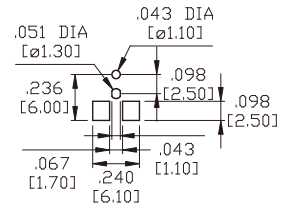
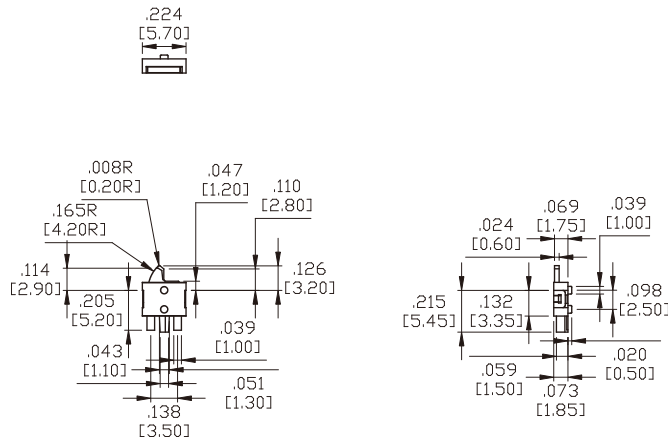
12NTL

REFLOW PATTERN

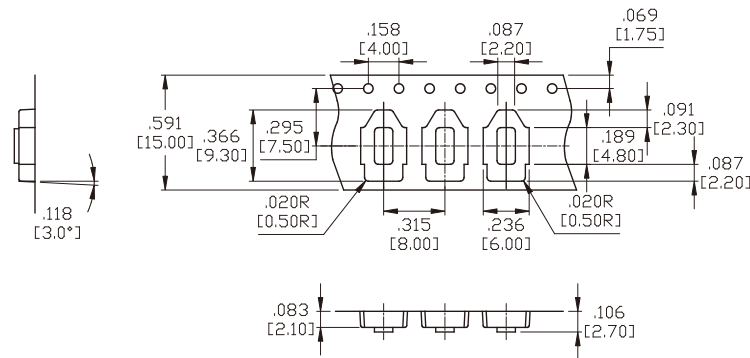


12NTR

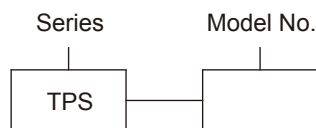
REFLOW PATTERN



REEL TAPING



HOW TO ORDER



Toggle

Rocker

Slide

Pushbutton

AV

Rotary

Tact

Touch Key

Miscellaneous