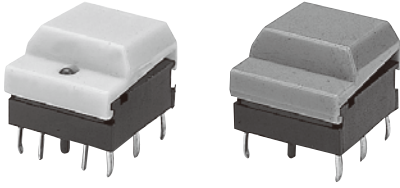
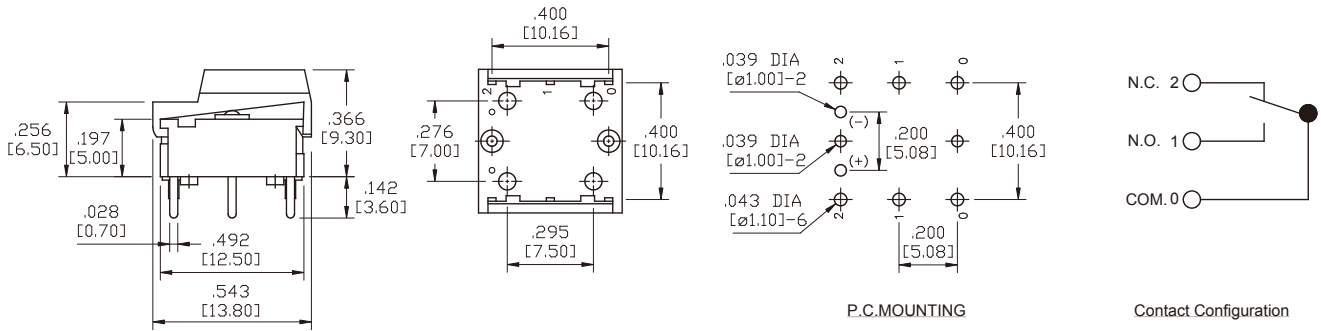


**SPECIFICATIONS:**

RATING: 50mA 24VDC (Minimum 1µA current is acceptable)  
 INITIAL CONTACT RESISTANCE: 20m-ohms max. (AC 200µV, 5mA)  
 DIELECTRIC STRENGTH: 250V AC 1 minute (Except between terminals of LED)  
 INSULATION RESISTANCE: 100M-ohms min. (250V DC megger)  
 ELECTRICAL LIFE: 200,000 operations (Rated voltage and current)  
 STATIC CAPACITY: 1.5pF max. (1MHz)  
 SHOCK RESISTANCE: 30G (3 directions perpendicular to each other 3 times for each direction)  
 OPERATION TEMPERATURE RANGE: -10°C to +60°C

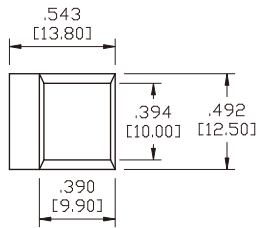


Specifications and Dimensions subject to change

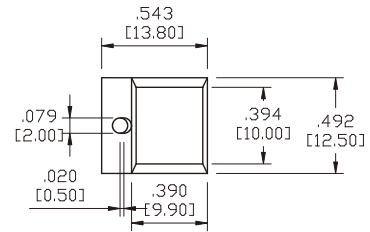


**CAP STYLES**

A0



A1



**CAP COLORS**

- 1=RED
- 2=YELLOW
- 3=GREEN
- 4=WHITE
- 5=BLACK
- 7=BLUE
- 8=Brown

**LED COLORS**

- 1=RED
- 2=YELLOW
- 3=GREEN

**HOW TO ORDER**

