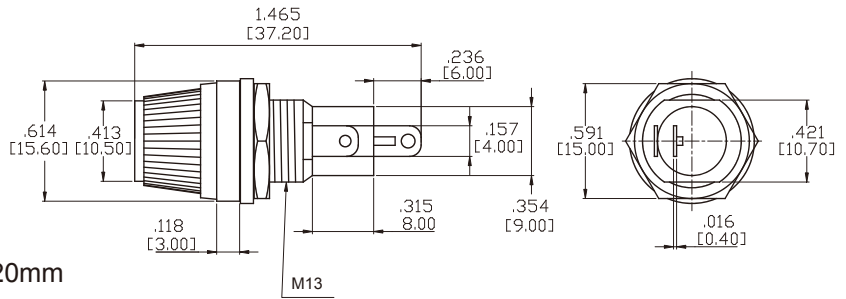


R22-0111



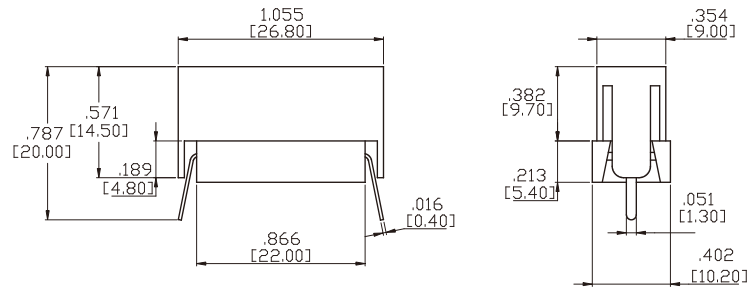
10A 250VAC 5.20 DIA. x 20mm



R22-0112



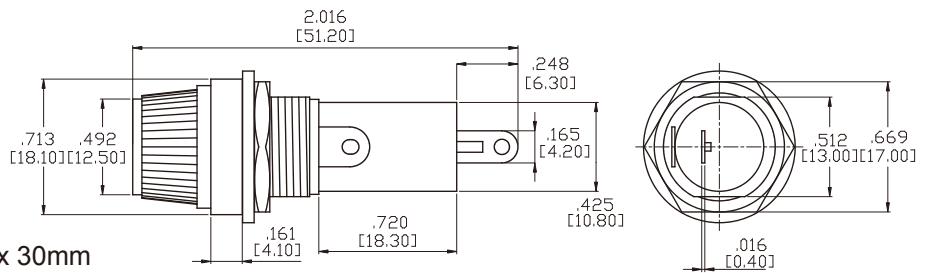
6A 250VAC 5.20 DIA. x 20mm



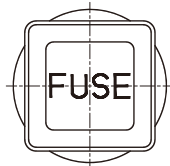
R22-0113



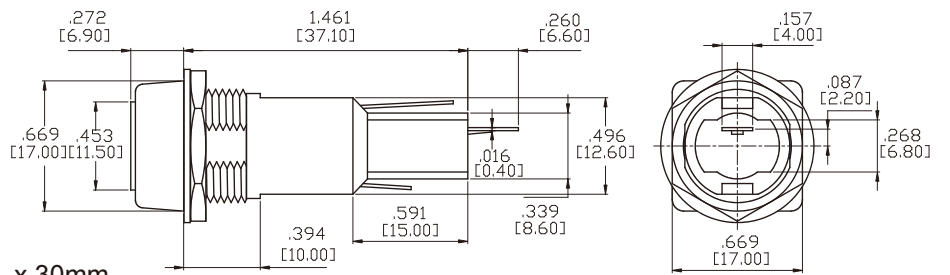
10A 250VAC 6.40 DIA. x 30mm



R22-0114



10A 250VAC 6.40 DIA. x 30mm



R22-0115



10A 250VAC 6.40 DIA. x 30mm

